

# 378

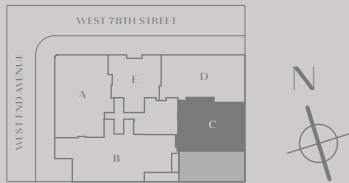
## WEST END AVENUE

### RESIDENCE 2C LOWER LEVEL

5 BEDROOMS  
5 BATHROOMS  
1 POWDER ROOM

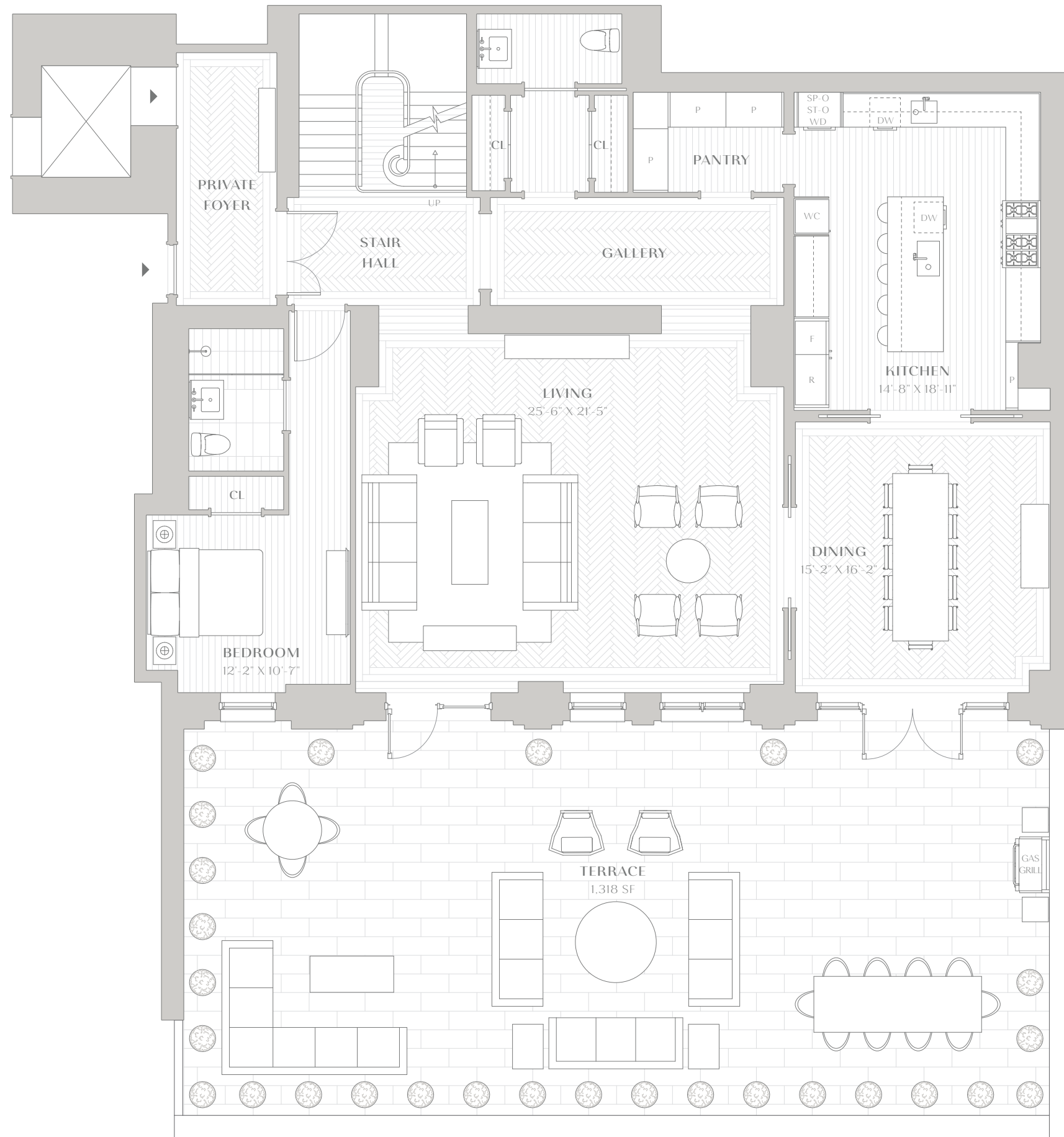
LOWER LEVEL INTERIOR  
2,220 SQ FT . 206.24 SQ M  
UPPER LEVEL INTERIOR  
1,994 SQ FT . 185.24 SQ M  
TOTAL INTERIOR  
4,214 SQ FT . 391.48 SQ M

LOWER LEVEL EXTERIOR  
1,318 SQ FT . 122.41 SQ M  
UPPER LEVEL EXTERIOR  
94 SQ FT . 8.73 SQ M  
TOTAL EXTERIOR  
1,412 SQ FT . 131.14 SQ M



212.799.0378  
378WEA.COM  
INFO@378WEA.COM

EXCLUSIVE SALES & MARKETING



ON BEHALF OF 378 WEA OWNER LLC, ALCHEMY PROPERTIES INC. AND COMPASS ARE PROUD TO BE THE EXCLUSIVE SALES BROKERS OF 378 WEST END AVENUE. CO-BROKERS ARE WELCOMED AND ENCOURAGED. THE COMPLETE TERMS ARE IN AN OFFERING PLAN AVAILABLE FROM THE SPONSOR. FILE NO. CD19-0412. SPONSOR RESERVES THE RIGHT TO MAKE CHANGES IN ACCORDANCE WITH THE OFFERING PLAN. ALL DIMENSIONS, ARTIST RENDERINGS, AND ILLUSTRATIONS ARE APPROXIMATE AND SUBJECT TO NORMAL CONSTRUCTION VARIANCES AND TOLERANCES. NOTED DIMENSIONS REFLECT INTERIOR DIMENSIONS OF SPACE. PLEASE CONSULT THE OFFERING PLAN FOR MORE DETAIL. WE ARE PLEDGED TO THE LETTER AND SPIRIT OF U.S. POLICY FOR THE ACHIEVEMENT OF EQUAL HOUSING OPPORTUNITY THROUGHOUT THE NATION. WE ENCOURAGE AND SUPPORT AN AFFIRMATIVE ADVERTISING AND MARKETING PROGRAM IN WHICH THERE ARE NO BARRIERS TO OBTAINING HOUSING BECAUSE OF RACE, CREED, COLOR, NATIONAL ORIGIN, SEXUAL ORIENTATION, GENDER IDENTITY OR EXPRESSION, MILITARY STATUS, SEX, AGE, DISABILITY, MARITAL STATUS, LAWFUL SOURCE OF INCOME OR FAMILIAL STATUS. BRAND BY WILLIAMS NEW YORK.

# 378

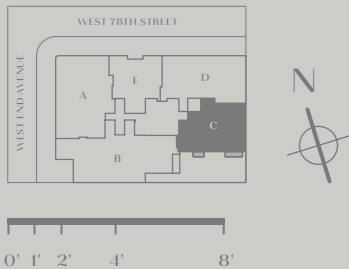
## WEST END AVENUE

### RESIDENCE 2C UPPER LEVEL

5 BEDROOMS  
5 BATHROOMS  
1 POWDER ROOM

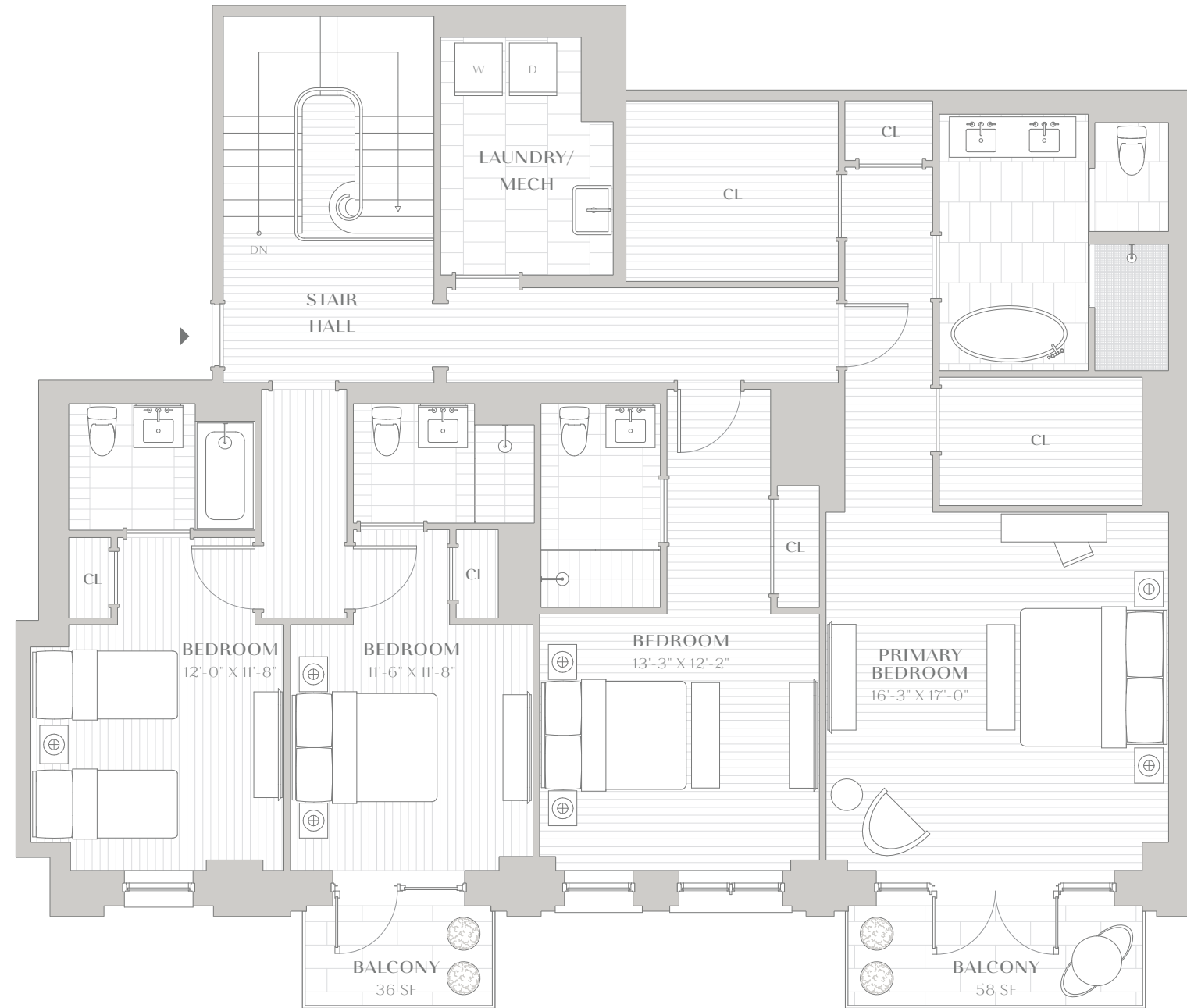
LOWER LEVEL INTERIOR  
2,220 SQ FT . 206.24 SQ M  
UPPER LEVEL INTERIOR  
1,994 SQ FT . 185.24 SQ M  
TOTAL INTERIOR  
4,214 SQ FT . 391.48 SQ M

LOWER LEVEL EXTERIOR  
1,318 SQ FT . 122.41 SQ M  
UPPER LEVEL EXTERIOR  
94 SQ FT . 8.73 SQ M  
TOTAL EXTERIOR  
1,412 SQ FT . 131.14 SQ M



212.799.0378  
378WEA.COM  
INFO@378WEA.COM

EXCLUSIVE SALES & MARKETING



ON BEHALF OF 378 WEA OWNER LLC, ALCHEMY PROPERTIES INC. AND COMPASS ARE PROUD TO BE THE EXCLUSIVE SALES BROKERS OF 378 WEST END AVENUE. CO-BROKERS ARE WELCOMED AND ENCOURAGED. THE COMPLETE TERMS ARE IN AN OFFERING PLAN AVAILABLE FROM THE SPONSOR. FILE NO. CD19-0412. SPONSOR RESERVES THE RIGHT TO MAKE CHANGES IN ACCORDANCE WITH THE OFFERING PLAN. ALL DIMENSIONS, ARTIST RENDERINGS, AND ILLUSTRATIONS ARE APPROXIMATE AND SUBJECT TO NORMAL CONSTRUCTION VARIANCES AND TOLERANCES. NOTED DIMENSIONS REFLECT INTERIOR DIMENSIONS OF SPACE. PLEASE CONSULT THE OFFERING PLAN FOR MORE DETAIL. WE ARE PLEDGED TO THE LETTER AND SPIRIT OF U.S. POLICY FOR THE ACHIEVEMENT OF EQUAL HOUSING OPPORTUNITY THROUGHOUT THE NATION. WE ENCOURAGE AND SUPPORT AN AFFIRMATIVE ADVERTISING AND MARKETING PROGRAM IN WHICH THERE ARE NO BARRIERS TO OBTAINING HOUSING BECAUSE OF RACE, CREED, COLOR, NATIONAL ORIGIN, SEXUAL ORIENTATION, GENDER IDENTITY OR EXPRESSION, MILITARY STATUS, SEX, AGE, DISABILITY, MARITAL STATUS, LAWFUL SOURCE OF INCOME OR FAMILIAL STATUS. BRAND BY WILLIAMS NEW YORK.